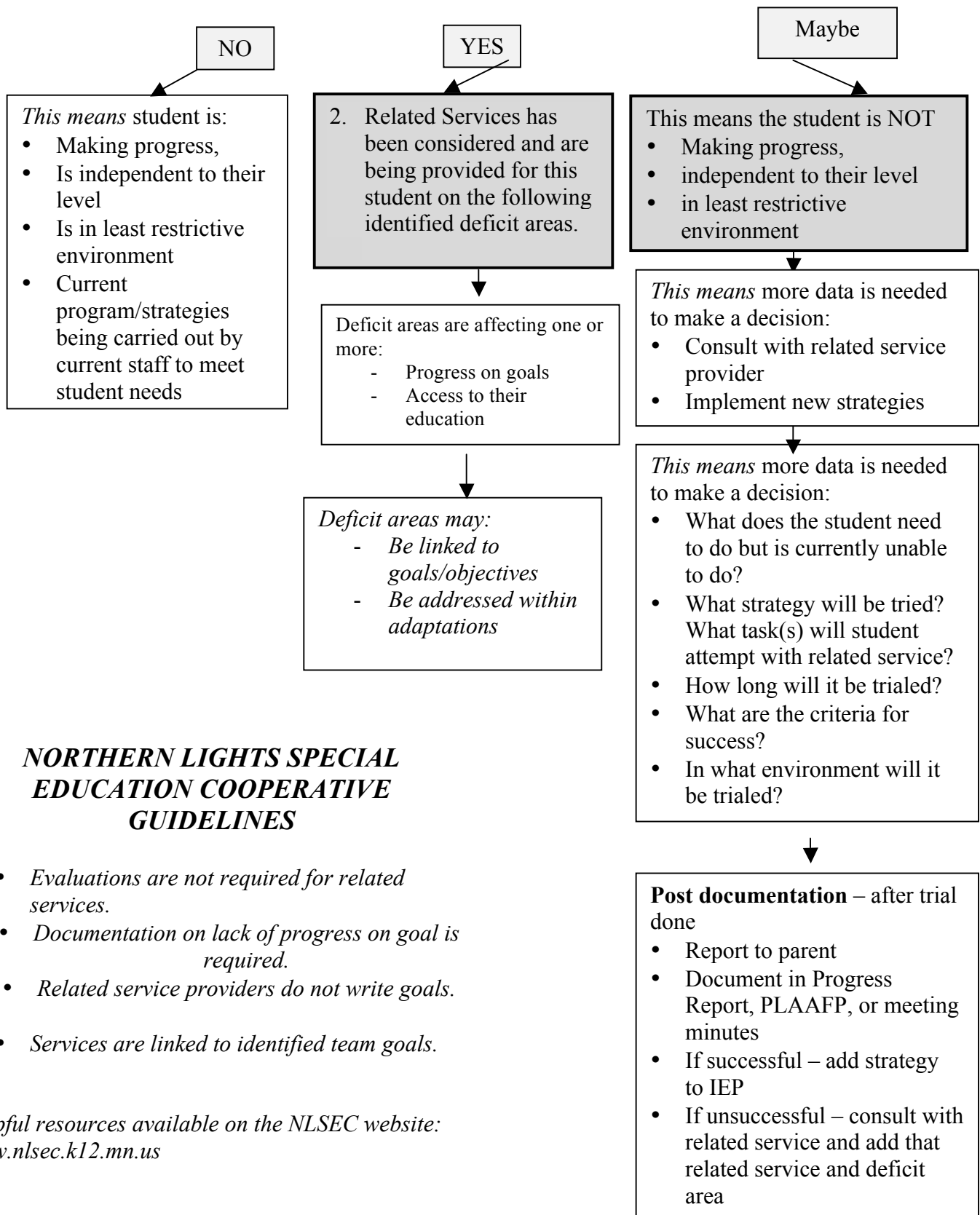


# Are Related Services Needed Because Student Is Not Making Progress on IEP Goals?



## ***NORTHERN LIGHTS SPECIAL EDUCATION COOPERATIVE GUIDELINES***

- *Evaluations are not required for related services.*
- *Documentation on lack of progress on goal is required.*
- *Related service providers do not write goals.*
- *Services are linked to identified team goals.*

*Helpful resources available on the NLSEC website:  
www.nlsec.k12.mn.us*